

This wonderful motorcycle tour takes in some of Brazil's most stunning colonial towns, places such as the exquisite Ouro Preto, built in the Serra do Espinhaco range, and the wonderful Tiradentes. We visit quaint seaside villages, such as the stunning Buzios, and the relaxing spa town of Caxambu. The ride encompasses many beautiful alpine regions as we will ride amongst magnificent mountains and valleys and explore cobblestone villages built amongst the hills before descending from the mountains visiting the incomparable Paraty and riding one of the worlds finest coastal rides, the Costa Verde (Emerald Coast), before returning to the legendary city of Rio de Janeiro. Join us on this brief but experience rich motorcycle tour

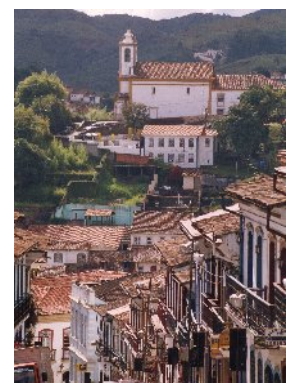
The ride

Week One

Today we explore the incredible city of Rio de Janeiro taking in all the sights that have made this city so internationally famous, from Ipanema to Copacabana, Pao de Azucar (sugarloaf mountain) to Corcovado (statue of christ) we see them all. After lunch we transfer to idyllic small town of Penedo situated on the edge of magnificent Itatiaia National Park, we spend a full day here getting to know the bikes and riding the wonderful surrounding Alpine countryside. We ride out, bound for the stunning beachside resort town of Buzios "discovered" by Bridgette Bardott. The town is on a peninsular with no less than 17 beaches. Re-tracing our ride along the winding coast road we ride into the mountains and ascend 1000mts before arriving wonderfully "Swiss" township of Nova Friburgo. The ride continues on to the beautiful gold rush town of Ouro Preto. This architectural gem of a city flourished in the 18th century thanks to gold and lots of it. A short 175km ride will see us at another gold rush era town of Tiradentes. This is an impossibly beautiful town along with the nearby Sao Jao Del Rei so we spend two nights here exploring this stunning region, either by steam train or by bike the choice is yours.

Week Two

We ride off for the tranquil resort town of Caxambu famed for its mineral waters and enjoy a spa noted for curing a multitude of ailments. We ride down from the mountains and join the Costa Verde before reaching the beautiful Paraty sandwiched between the forested mountains and the magnificent Atlantic. We depart late enabling us to explore the many nearby beaches or wander the cobble stoned town. The ride along the Emerald Coast is one of the world's finest coastal rides and we take our time. We reach Penedo late afternoon for our penultimate night before transferring to Rio the following day. Where we enjoy our last meal together remembering a wonderful journey that only a few can say "they have completed".



Brazilian Gold

11 Days

Tour Highlights

- Sunset drinks above Rio from Sugar Loaf Mountain
- Corcovado
- Alpine region of Itatiaia
- Charming Buzios
- Colonial gold towns of Ouro Preto and Tiradentes
- The stunning Paraty
- Riding the Costa Verde

The route

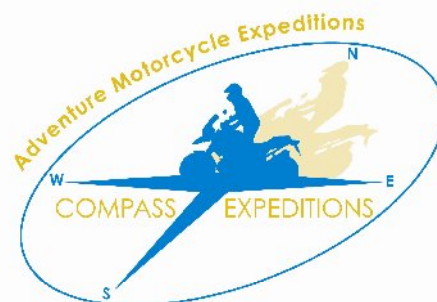


What's Included

- Airport transfers
- Motorcycle rental **BMW F 650 GS**
- GPS with waypoints pre programmed in, for entire expedition
- Fuel
- Tolls
- Border paperwork
- 2 staff, one ride leader and support vehicle driver
- Support vehicle with passenger carrying ability
- Non alcoholic drinks on support vehicle
- Breakfasts everyday, lunches and dinners on all riding days
- Accommodation in excellent small hotels
- Services of ride leader and support vehicle driver
- Pre departure material and route maps
- Access to satellite phones, pay per minute
- Compass Expeditions dress shirt and baseball cap
- Entrance to Corcovado (statue of Christ)
- Sugar Loaf Mountain cable car
- Caxambu Spa
- National Park entrances

What's not included

- International Flights
- Visas (if required)
- Personal spending money
- Lunches and dinners on non riding days
- Personal health insurance
- Tips and gratuities



Discover the Extraordinary

General Tour information

The following information is relevant to this tour, please read carefully and if you have more questions please email us on info@compassexpeditions.com

Ride profile

Grade One



Please refer to FAQ page on our website for full details on our grading system

Total distance: 1510 Ks / 945 Miles
Days on bike: 8

100% of this ride is on paved roads.

Riding conditions vary between very busy (around Rio) to winding narrow roads as we ride the Costa Verde.

Most roads are generally two lanes wide, very limited riding is on busy freeways. Pavement can be very potholed on occasions

Suitable for two up riding.

Accommodation

- 11 nights hotels & 1 bonus night
- Accommodation are generally 3 to 4 star hotels, for a list of our accommodation styles please refer to our FAQ page on our website.
- A flexible attitude is needed as standards are not always what we are accustomed to.

Single supplement : US\$ 500

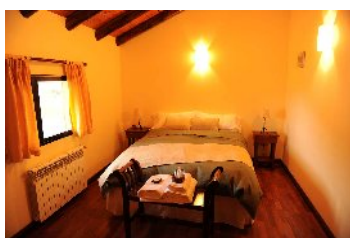
Included meals

Breakfasts: 11
Lunches: 8
Dinners: 10

On everyday of the tour we provide breakfast, on all ride days we provide a picnic lunch that we prepare ourselves from our mobile kitchen, on all ride days we provide dinner in a reliable restaurant that we have used many times before.

General info

- Please note that you will need to be in **Rio do Janeiro** one day prior to start of expedition (accommodation included)
- All prices are based on rental of **BMW F 650 GS** for **BMW 1150 Gs** add **US\$ 600**
- For bookings of 60 days or less that have an "included flight" a surcharge of **US\$ 200** is added
- It is a requirement that all clients have appropriate insurance for this type of expedition.



Great accommodations

Discover the Extraordinary

