



Jan / Feb 2009

Patagonia Explorer 2010, already full

While it may seem we urge potential clients to “book early” we do it for a reason, our February 2010 departure for our extremely popular Patagonia Explorer is already fully booked, many of our other tours are also filling fast, don't delay in booking for your adventure before it is gone



Our bikes in Patagonia



Compass Expeditions Newsletter



Welcome to the Compass Expeditions Newsletter. We hope that everyone had a great Christmas and safe New Year and that 2009 brings some exciting travel opportunities for you. all. This edition is packed with news; the Patagonia season is drawing to a close, the guys from the legendary Ace Café are helping us out, the NEC bike show has come and gone and we introduce our new Sales Director in the USA. Our featured ride is a great journey following the recent Paris Dakar held in South America for the first time ever, read on and dare to dream.

Your Compass Expeditions Crew

Patagonian Season 2008/09 it doesn't get any better

Well so far it has been a Patagonian season to remember, especially for the passengers of the 17 day Patagonian Explorer. The weather for the first trip of the season was better than could have been expected; with sunny days continuing throughout the tour and the only real blast of Patagonian winds occurred on a shorter distance ride day. Of course this turned it into a slower ride than planned, as the prevailing winds kept speeds to around 60 km hour on the Ripio (gravel). However halfway through the day as we saw the smiles appear on peoples faces

we knew that everyone was enjoying the challenge. As we arrived at our destination at the end of the days ride, the group, although exhausted, were laughing and swapping stories of how the wind challenged them all day.

We got to see the best of the stunning Moreno glacier, as the sun was shining brilliantly when we arrived and continued to bring out the stunning colours of the glacier throughout the day. Passengers and crew alike were left in awe of the size and beauty of this gigantic glacier.

Our stay at the “Estancia La Angostura”

was a night to remember as all the passengers got an insight into life on this beautiful sheep and cattle property. The 100 year old homestead is built at the base of a large plateau and faces onto a wetland teeming with water birds.

The family and staff topped off the experience with a traditional Argentinean Asado (BBQ). The fresh lamb is slowly roasted over the flames for several hours whilst being treated with age old seasoning recipes. The result, one group of overfed and very content passengers.

Continued on page 3

Stop press--stop press--stop press--stop press--stop pr

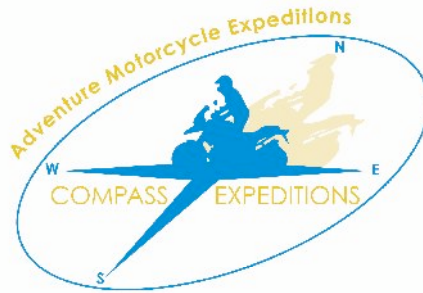
Introducing our USA Sales Director

Susan Orton has recently joined Compass Expeditions as our US Sales Director. Originally from Missoula, Montana, Susan was raised with a sense of adventure and love for animals and the outdoors. She has a degree from the University of Montana and her background is in sales and marketing. Her husband John hails from Australia and has ridden a motorcycle for as long as he can remember. "I rode one time on the back of my husband's bike and decided right then and there I needed to get one of my own!" Susan owns a Kawasaki Vulcan 900 and loves to cruise to distant places around Phoenix, Arizona where she shares a home with her husband and two German Shepherds. She recently completed a motorcycle trip to Mexico where she attended the Rocky Point Motorcycle Rally. Susan says, "Yup, that was a real eye-opener! Sturgis anyone?" Contact Susan anytime for questions about Compass Expeditions or just to meet up for a bike ride! Oh and favorite destination is at the end of any two lane road!

Susan's contact details are:

Susan Orton
Compass Expeditions USA
1530 S.Val Vista Drive
Suite 106-11
Gilbert, Arizona 85296

Email:
info@compassexpeditions.com



Stop press--stop press--stop press--stop press--stop

We were lucky enough to have join us for our Patagonia Explorer, documentary filmmaker, Carmine Caputo who filmed over 36 hours of footage on this ride.

We shall be producing a half hour promotional DVD of this ride, for anyone wanting a copy of this free DVD please go to our website to order.

Stop press--stop press--stop press--stop press--stop

Last year we attended the 12 day International Motorcycle and Scooter show held at the NEC in Birmingham. A great time was had by all and it was great to meet so many people still genuinely enthusiastic about the prospect of travel on motorcycles to far flung corners of the earth. The doomsday Sayers revel in the fact that economies are shrinking and there is less money around, however the huge success of the show proved that at least bikers intend to go on living. We will be back this year only this time with a thicker jacket (my god it was cold). To all our clients past, present and future thank you for making our time so enjoyable while in the UK



Who better than an American with an Aussie Partner to appoint as our Sales Director

"You just have to take every day as it comes, but above all take it as a gift, because you just never know what's next"

Cathy McLean,
Freidreichs Ataxia sufferer



Another hard day in the office for our documentary film maker Carmine. He did a little work though logging over 36 hours of footage and well in excess of 4000 photos, our clients also sent us a staggering 2500 photos, scenery was OK we guess

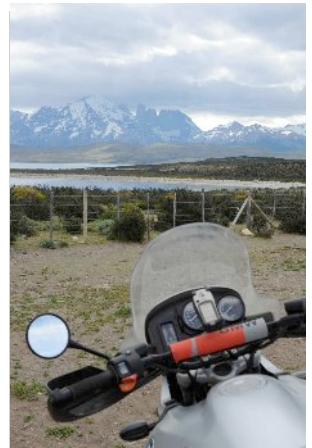
Continued from page one:

Of course, as always Torres Del Paine National Park, which in our opinion is the Jewel in Patagonia's crown, made the journey in and out of the park very slow, as the group were continually stopping for photos as each new bend in the road revealed another jaw dropping vista. From the wildlife viewing, the stunning towers, the winding gravel roads to the amazing sunsets, you cannot but love this place.

On the final day we rode into Ushuaia, our destination "fin del Mundo" the end of the world. After 3700 kms in 17 days, through wind, occasional challenging roads, passing stunning scenery, we finally all arrived safely on the edge of town, all a little surprised that we were really there. All of us feeling jubilant and at the same time a little sad that this journey was coming to an end.

The general opinion was that there is an amazing sense of satisfaction after having traveled so far through such an enormous, beautiful and challenging landscape.

We would like to take this opportunity to thank all of the passengers who participated in this amazing journey. Scenery alone does not make an expedition, it's the company along the way that makes it all worth while. We would also like to take this opportunity to thank the talented photographer and documentary filmmaker, Mr. Carmine Caputo, whom we were lucky enough to have along to document the expedition. His enthusiasm and contribution was infectious.



Patagonia dreaming



Our London to Vladivostok departure from the Ace Café

We are getting excited with the looming departure of this years London to Vladivostok 100 day expedition. The ride will be departing the legendary Ace Café, on the North Circular Road, Stonebridge, London on the 14th June 2009 which also happens to be the Ace Café Triumph day, 1000s are expected and Linda, Mark, Carl and the crew from the Ace Café have extended their support for our departure.

The original Ace Café opened in 1938 as a stop for truckies, but were soon joined by bikers and has become an icon for bikers both in the UK and around the world.

The Ace was badly damaged in WW 2 but was re-opened in 1949, and became a launch pad for some famous rockers and bikers. Sadly in 1969 the Ace closed it doors.

In 1994 plans were put in place to re-open the Ace. Mark Wilsmore held the first annual Ace reunion with an estimated 12,000 people turning out, 25 years after its closing, by 1997 over 25,000 people were attending what had become known as Ace day.

In September 2001 the Ace Café re-opened its doors 32 years after its close, still in its original spot.

The Ace truly is one of the worlds great biker cafes.



The legendary Ace Cafe



The Ace Café, circa 1938



From the Ace to Vladivostok this is going to be the ride of a lifetime, join us while there are a few remaining spots left

Featured Tour: the Dakar 2009/2010

Well its been completed for another year only this time the Paris Dakar was run in South America. On the last day of this year 31st Dec 2009 we will be departing Buenos Aires on a 24 day tour that will follow, generally, the course taken by the rally. This expedition will traverse some wonderful desert scenery, and areas well off the Gringo Trail, the ride passes snow capped volcanoes, lagoons filled with Flamingo and vast empty deserts shrouded in an eerie silence, its inspiring stuff. The rally participants didn't really have a lot of time for taking in the sights but we will and we detour often off the rally route to take in some incredible views. The rally is approximately 9000klms/ 5600 miles in length but we will be taking a few short cuts as we only have 24 days. Some nights will be spend wild camping, not too many though, out under a carpet of stars deep in Patagonia and in the stunning Atacama Desert. This ride isn't for the feint hearted, some off road experience is required as some limited sections are on loose gravel and sand, but unlike the rally we are not in a hurry, there are no prizes for getting there first.

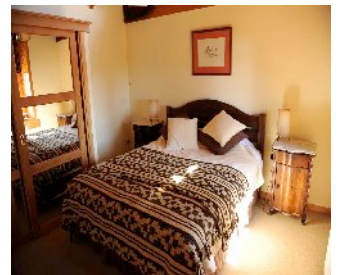
The bikes of choice are the light, agile BMW F 650 GS twins

This expedition comes fully supported by two crew, support vehicle and GPS on each bike. We have all seen it on TV and now is the time for us to ride the Rallye

It is important to remember that we at Compass Expeditions have accumulated nearly 20 years expedition leading experience on the South American continent and we know the continent like no other operator, all very important for an expedition of this nature.



Our BMW F 650 Twins, beefed up for the job, head-light and radiator protectors, handmade aluminium bash plates and oil filter guard, Barkbusters and engine protectors



Just because were bikers doesn't mean it has to be unnecessarily hard

COMPASS EXPEDITIONS

62 Cowans Drive
Dales Creek, 3341
Victoria, Australia

Phone: 1300 887 327 (toll free within Australia)
Phone: +61 3 5368 6473 (for a call back)

E-mail: info@compassexpeditions.com
Website: www.compassexpeditions.com

That's it for this newsletter, thanks for taking the time to read it and we hoped you enjoyed, we look forward to hearing from you soon.

Cheers, your Compass Expeditions crew

